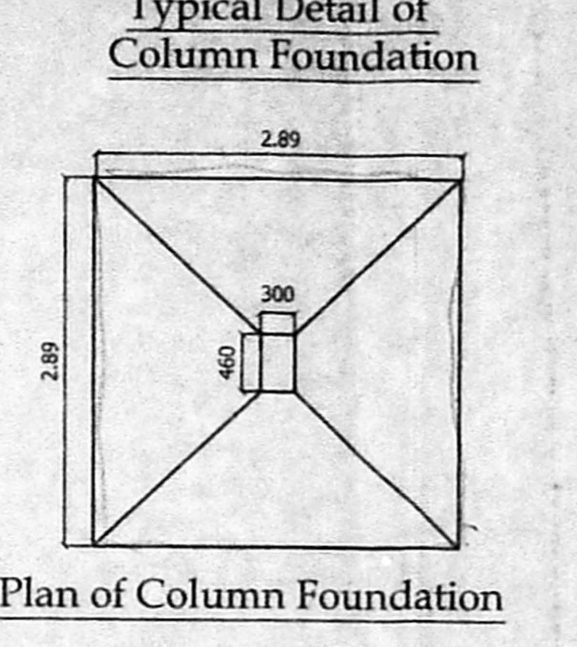
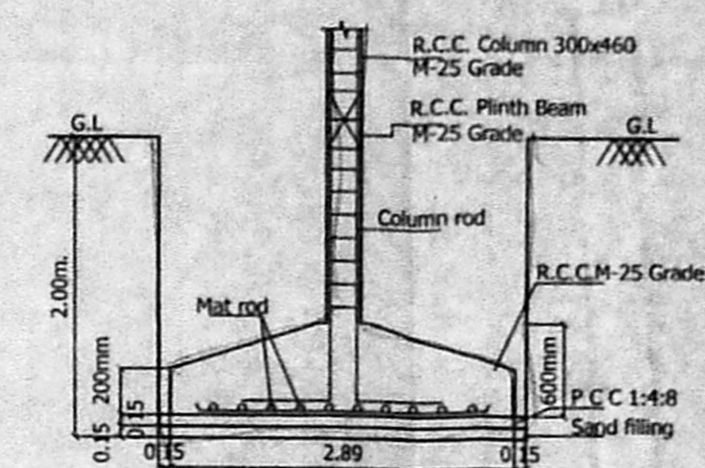
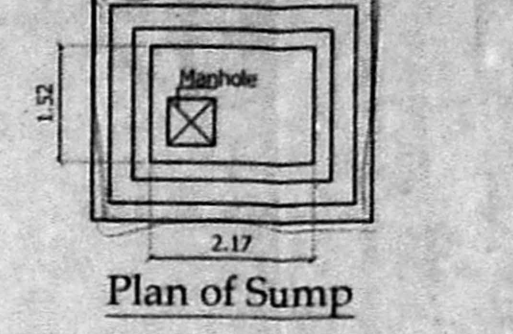
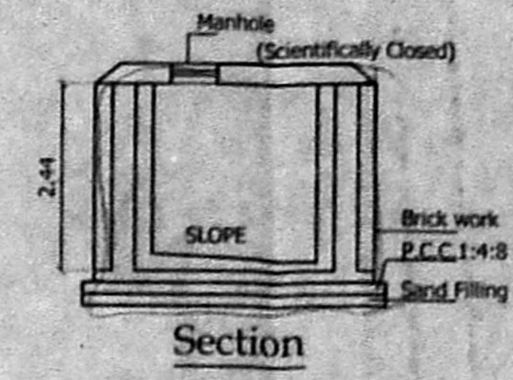
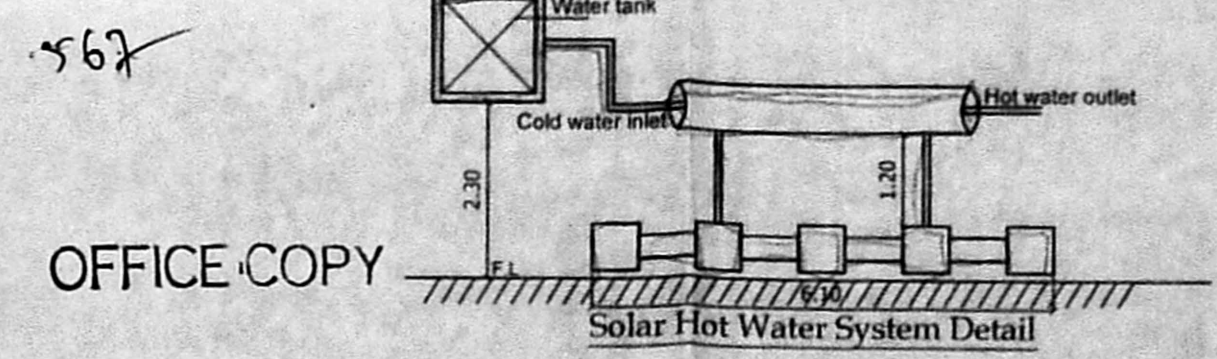


Planning Permission No. **PP/NHR/19/389/2019**
APPROVED
 Subject to conditions mentioned in the office order No. **110/19**
 Letter No. **PP/NHR/19/389/2019**
 Dated **30/08/19**
 For Chief Planner
 Non High Rise Buildings
 Chennai Metropolitan Development Authority
 Chennai-600 008.
 This approval is valid only after Building Permit is issued by the concerned Local Body.

This Planning Permission issued under the provisions of the TNCDR, 2019 is subject to the conditions of the W.P.(MD) No.8948 of 2019 and W.P.(M) Nos. 6912 & 6913 of 2019.

This Planning Permission as per the delegated powers given by Member Secretary, CMDA in Office Order No. 7/2019 dated 12.01.2019.



SCHEDULE OF JOINERY

S.No.	WIDTH	DESCRIPTION
1	3.05	T.W PANEL DOOR
2	2.13	T.W PANEL DOOR
3	2.13	T.W PANEL DOOR
4	2.13	T.W PANEL DOOR
5	2.13	T.W PANEL DOOR
6	2.13	T.W PANEL DOOR
7	2.13	T.W PANEL DOOR
8	2.13	T.W PANEL DOOR
9	2.13	T.W PANEL DOOR
10	2.13	T.W PANEL DOOR
11	2.13	T.W PANEL DOOR
12	2.13	T.W PANEL DOOR
13	2.13	T.W PANEL DOOR
14	2.13	T.W PANEL DOOR
15	2.13	T.W PANEL DOOR
16	2.13	T.W PANEL DOOR
17	2.13	T.W PANEL DOOR
18	2.13	T.W PANEL DOOR
19	2.13	T.W PANEL DOOR
20	2.13	T.W PANEL DOOR
21	2.13	T.W PANEL DOOR
22	2.13	T.W PANEL DOOR
23	2.13	T.W PANEL DOOR
24	2.13	T.W PANEL DOOR
25	2.13	T.W PANEL DOOR
26	2.13	T.W PANEL DOOR
27	2.13	T.W PANEL DOOR
28	2.13	T.W PANEL DOOR
29	2.13	T.W PANEL DOOR
30	2.13	T.W PANEL DOOR
31	2.13	T.W PANEL DOOR
32	2.13	T.W PANEL DOOR
33	2.13	T.W PANEL DOOR
34	2.13	T.W PANEL DOOR
35	2.13	T.W PANEL DOOR
36	2.13	T.W PANEL DOOR
37	2.13	T.W PANEL DOOR
38	2.13	T.W PANEL DOOR
39	2.13	T.W PANEL DOOR
40	2.13	T.W PANEL DOOR
41	2.13	T.W PANEL DOOR
42	2.13	T.W PANEL DOOR
43	2.13	T.W PANEL DOOR
44	2.13	T.W PANEL DOOR
45	2.13	T.W PANEL DOOR
46	2.13	T.W PANEL DOOR
47	2.13	T.W PANEL DOOR
48	2.13	T.W PANEL DOOR
49	2.13	T.W PANEL DOOR
50	2.13	T.W PANEL DOOR
51	2.13	T.W PANEL DOOR
52	2.13	T.W PANEL DOOR
53	2.13	T.W PANEL DOOR
54	2.13	T.W PANEL DOOR
55	2.13	T.W PANEL DOOR
56	2.13	T.W PANEL DOOR
57	2.13	T.W PANEL DOOR
58	2.13	T.W PANEL DOOR
59	2.13	T.W PANEL DOOR
60	2.13	T.W PANEL DOOR
61	2.13	T.W PANEL DOOR
62	2.13	T.W PANEL DOOR
63	2.13	T.W PANEL DOOR
64	2.13	T.W PANEL DOOR
65	2.13	T.W PANEL DOOR
66	2.13	T.W PANEL DOOR
67	2.13	T.W PANEL DOOR
68	2.13	T.W PANEL DOOR
69	2.13	T.W PANEL DOOR
70	2.13	T.W PANEL DOOR
71	2.13	T.W PANEL DOOR
72	2.13	T.W PANEL DOOR
73	2.13	T.W PANEL DOOR
74	2.13	T.W PANEL DOOR
75	2.13	T.W PANEL DOOR
76	2.13	T.W PANEL DOOR
77	2.13	T.W PANEL DOOR
78	2.13	T.W PANEL DOOR
79	2.13	T.W PANEL DOOR
80	2.13	T.W PANEL DOOR
81	2.13	T.W PANEL DOOR
82	2.13	T.W PANEL DOOR
83	2.13	T.W PANEL DOOR
84	2.13	T.W PANEL DOOR
85	2.13	T.W PANEL DOOR
86	2.13	T.W PANEL DOOR
87	2.13	T.W PANEL DOOR
88	2.13	T.W PANEL DOOR
89	2.13	T.W PANEL DOOR
90	2.13	T.W PANEL DOOR
91	2.13	T.W PANEL DOOR
92	2.13	T.W PANEL DOOR
93	2.13	T.W PANEL DOOR
94	2.13	T.W PANEL DOOR
95	2.13	T.W PANEL DOOR
96	2.13	T.W PANEL DOOR
97	2.13	T.W PANEL DOOR
98	2.13	T.W PANEL DOOR
99	2.13	T.W PANEL DOOR
100	2.13	T.W PANEL DOOR

SPECIFICATION

- R.C.C IN M25 GRADE
- R.C.C IN M25 GRADE
- 230MM BRICK WORK IN C.M 1:5
- 115MM BRICK WORK IN C.M 1:5
- PLASTERING THE CEILING IN C.M 1:3
- PLASTERING THE WALL IN C.M 1:4
- WEATHERING COURSE IN BRICK JELLY LIME CONCRETE WITH A COURSE OF FLAT TILES.
- THE O.H.T IS SCIENTIFICALLY CLOSED
- THE U.G SUMP IS SCIENTIFICALLY CLOSED
- ALL W.C'S IN GROUND FLOOR RAISED BY 0.91M FROM G.L.

AREA STATEMENT

AS PER DOCUMENT	SQ.M
AS PER DOCUMENT	541.62
AS PER PATTA	530.00

Floor	FSI Area	D.U.
STILT FLOOR :	28.78	
FIRST FLOOR :	255.62	2
SECOND FLOOR :	255.62	2
THIRD FLOOR :	255.62	2
FOURTH FLOOR :	255.62	2
TOTAL BUILTUP AREA	1051.26	8

F.S.I : $\frac{1051.26}{530.00} = 1.984$
 CAR PARKING REQUIRED : 9 nos.
 CAR PARKING PROVIDED : 9 nos.

LEGEND

PROPOSED CONSTRUCTION
 BOUNDARY LINE
 ROADS

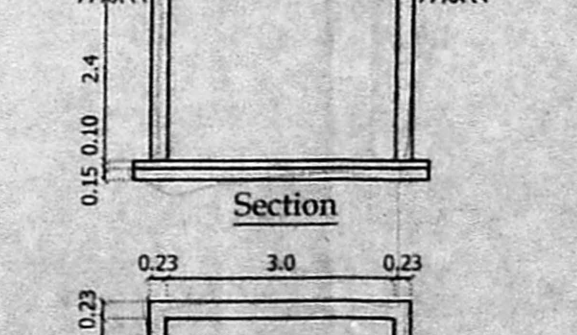
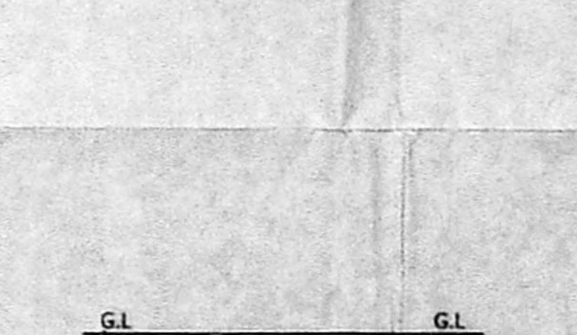
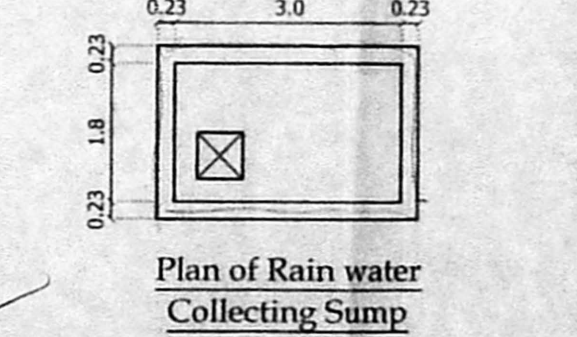
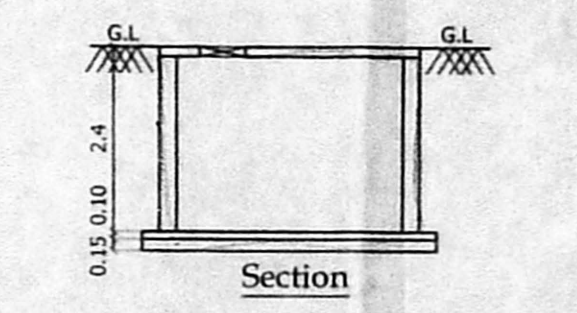
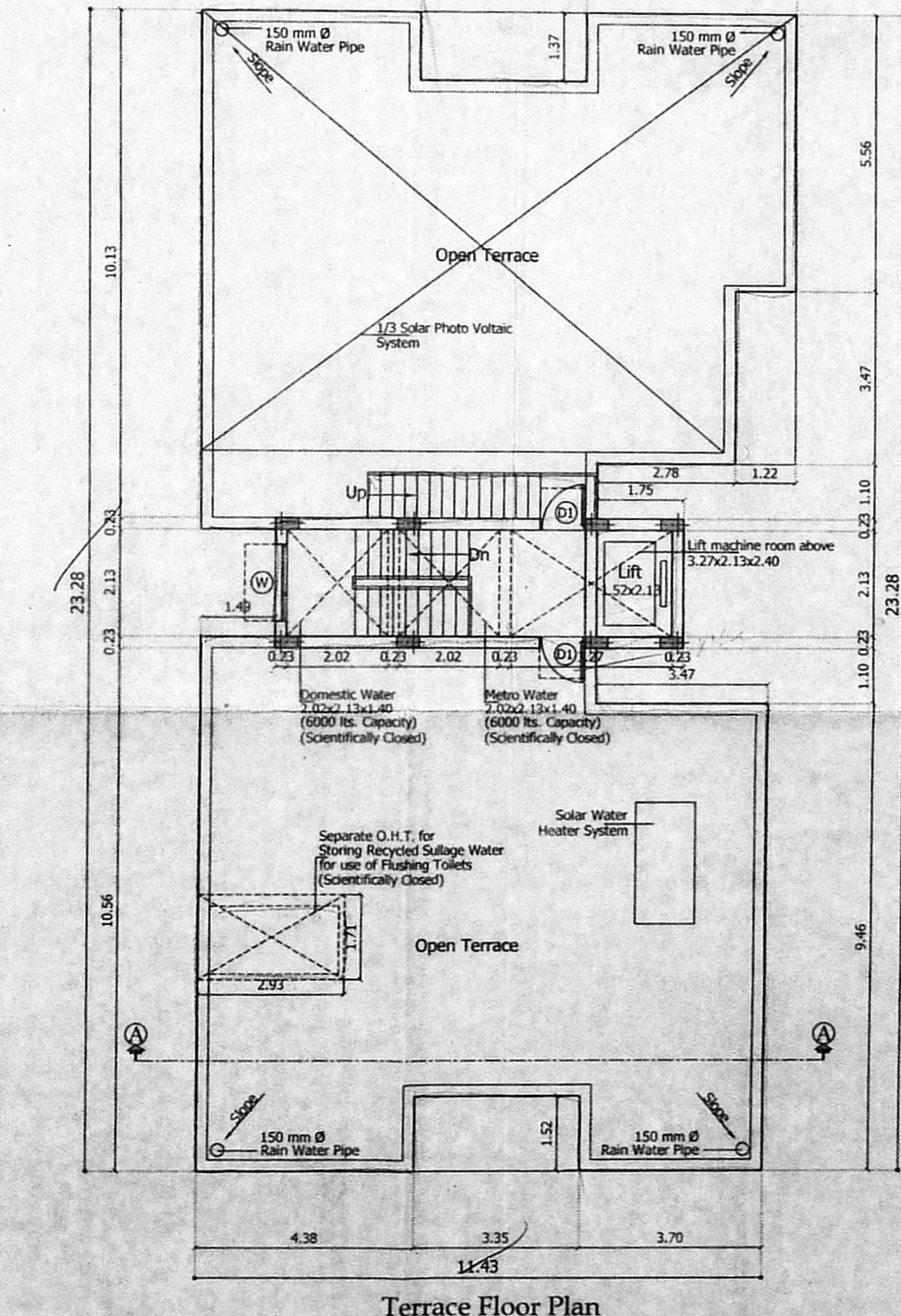
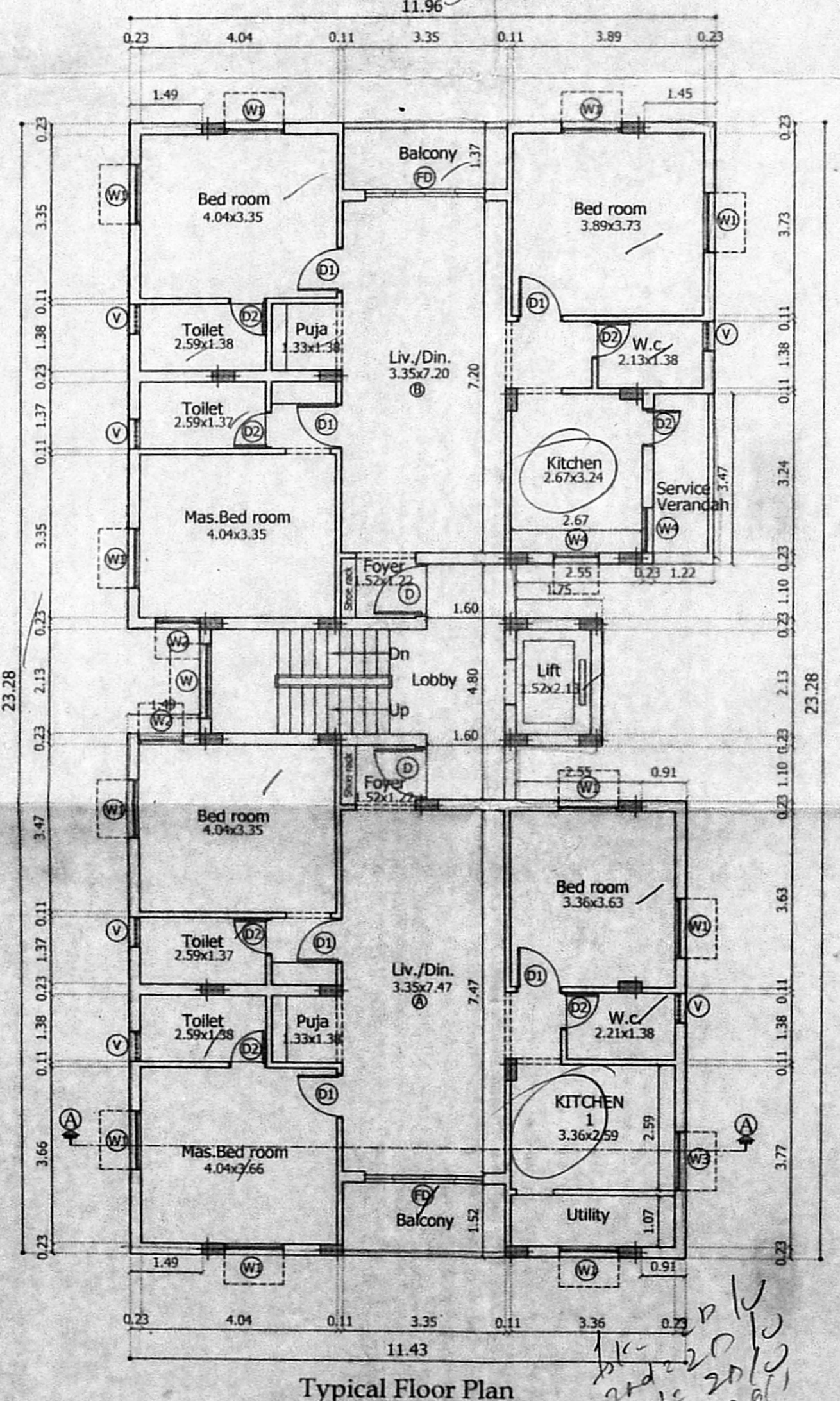
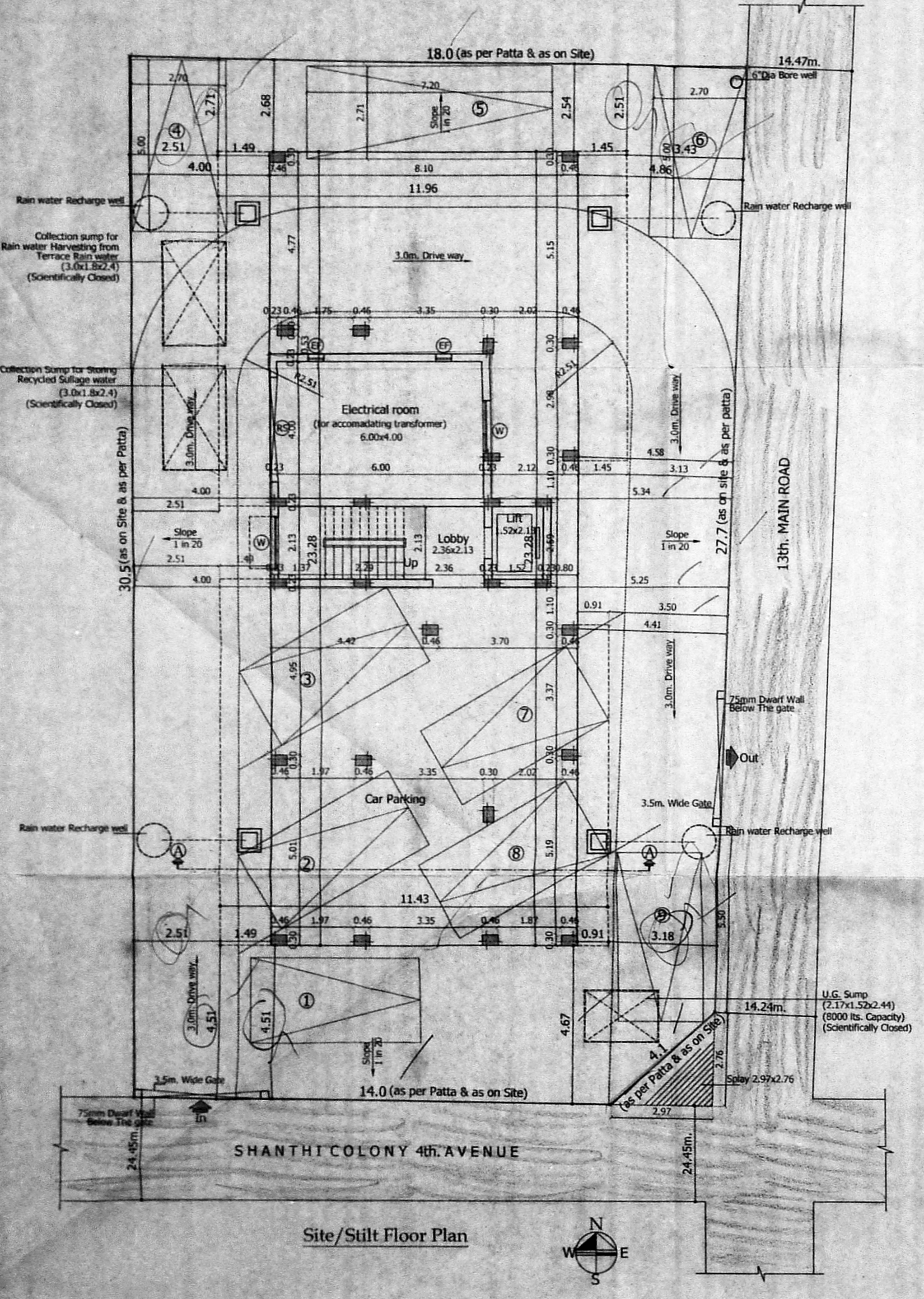
JOB TITLE
 PLAN SHOWING THE PROPOSED RESIDENTIAL APARTMENTS OF STILT + 4 FLOORS WITH 8 DWELLING UNITS AT OLD DOOR No : 186, NEW DOOR No. 350, SANTHI COLONY 4th AVENUE, ANNA NAGAR, CHENNAI - 600 040, COMPRISED IN OLD S. No. : 227/4PART, T. S. No. : 126/6, BLOCK No. 21, KOYAMBEDU VILLAGE, AMINJIKARAI TALUK, CHENNAI DISTRICT, GREATER CHENNAI CORPORATION, DIVISION No. : 99, ZONE - VIII.

SCALE: 1:100

POWER AGENT :

STRUCTURAL CONSULTANT
DR. ALEX JACOB
 B.E. M. Tech (Str) Ph.D (Hon).
 M.I.E (Aust), M.I.E (Ind)
 STRUCTURAL ENGINEER
 41/A BEACH ROAD
 KALAKSHETRA COLONY,
 CHENNAI-600 090.
 Reg. No. SE/GR-119/02/001

LICENSED SURVEYOR
V. SRINIVASAN, AIA
 Registered Architect-CA/98, 19755
 Licensed Surveyor-Corporation of Chennai
 P.A. No. 344
 Firm Arcade, P.47/1, 17th Street, Anna Nagar,
 Chennai-600 040 Ph. 2628 6529



Handwritten notes: *pk-2010, 2011, 2012, 2013, 2014, 2015, 2016, 2017, 2018, 2019, 2020, 2021, 2022, 2023, 2024, 2025, 2026, 2027, 2028, 2029, 2030, 2031, 2032, 2033, 2034, 2035, 2036, 2037, 2038, 2039, 2040, 2041, 2042, 2043, 2044, 2045, 2046, 2047, 2048, 2049, 2050, 2051, 2052, 2053, 2054, 2055, 2056, 2057, 2058, 2059, 2060, 2061, 2062, 2063, 2064, 2065, 2066, 2067, 2068, 2069, 2070, 2071, 2072, 2073, 2074, 2075, 2076, 2077, 2078, 2079, 2080, 2081, 2082, 2083, 2084, 2085, 2086, 2087, 2088, 2089, 2090, 2091, 2092, 2093, 2094, 2095, 2096, 2097, 2098, 2099, 2100, 2101, 2102, 2103, 2104, 2105, 2106, 2107, 2108, 2109, 2110, 2111, 2112, 2113, 2114, 2115, 2116, 2117, 2118, 2119, 2120, 2121, 2122, 2123, 2124, 2125, 2126, 2127, 2128, 2129, 2130, 2131, 2132, 2133, 2134, 2135, 2136, 2137, 2138, 2139, 2140, 2141, 2142, 2143, 2144, 2145, 2146, 2147, 2148, 2149, 2150, 2151, 2152, 2153, 2154, 2155, 2156, 2157, 2158, 2159, 2160, 2161, 2162, 2163, 2164, 2165, 2166, 2167, 2168, 2169, 2170, 2171, 2172, 2173, 2174, 2175, 2176, 2177, 2178, 2179, 2180, 2181, 2182, 2183, 2184, 2185, 2186, 2187, 2188, 2189, 2190, 2191, 2192, 2193, 2194, 2195, 2196, 2197, 2198, 2199, 2200, 2201, 2202, 2203, 2204, 2205, 2206, 2207, 2208, 2209, 2210, 2211, 2212, 2213, 2214, 2215, 2216, 2217, 2218, 2219, 2220, 2221, 2222, 2223, 2224, 2225, 2226, 2227, 2228, 2229, 2230, 2231, 2232, 2233, 2234, 2235, 2236, 2237, 2238, 2239, 2240, 2241, 2242, 2243, 2244, 2245, 2246, 2247, 2248, 2249, 2250, 2251, 2252, 2253, 2254, 2255, 2256, 2257, 2258, 2259, 2260, 2261, 2262, 2263, 2264, 2265, 2266, 2267, 2268, 2269, 2270, 2271, 2272, 2273, 2274, 2275, 2276, 2277, 2278, 2279, 2280, 2281, 2282, 2283, 2284, 2285, 2286, 2287, 2288, 2289, 2290, 2291, 2292, 2293, 2294, 2295, 2296, 2297, 2298, 2299, 2300, 2301, 2302, 2303, 2304, 2305, 2306, 2307, 2308, 2309, 2310, 2311, 2312, 2313, 2314, 2315, 2316, 2317, 2318, 2319, 2320, 2321, 2322, 2323, 2324, 2325, 2326, 2327, 2328, 2329, 2330, 2331, 2332, 2333, 2334, 2335, 2336, 2337, 2338, 2339, 2340, 2341, 2342, 2343, 2344, 2345, 2346, 2347, 2348, 2349, 2350, 2351, 2352, 2353, 2354, 2355, 2356, 2357, 2358, 2359, 2360, 2361, 2362, 2363, 2364, 2365, 2366, 2367, 2368, 2369, 2370, 2371, 2372, 2373, 2374, 2375, 2376, 2377, 2378, 2379, 2380, 2381, 2382, 2383, 2384, 2385, 2386, 2387, 2388, 2389, 2390, 2391, 2392, 2393, 2394, 2395, 2396, 2397, 2398, 2399, 2400, 2401, 2402, 2403, 2404, 2405, 2406, 2407, 2408, 2409, 2410, 2411, 2412, 2413, 2414, 2415, 2416, 2417, 2418, 2419, 2420, 2421, 2422, 2423, 2424, 2425, 2426, 2427, 2428, 2429, 2430, 2431, 2432, 2433, 2434, 2435, 2436, 2437, 2438, 2439, 2440, 2441, 2442, 2443, 2444, 2445, 2446, 2447, 2448, 2449, 2450, 2451, 2452, 2453, 2454, 2455, 2456, 2457, 2458, 2459, 2460, 2461, 2462, 2463, 2464, 2465, 2466, 2467, 2468, 2469, 2470, 2471, 2472, 2473, 2474, 2475, 2476, 2477, 2478, 2479, 2480, 2481, 2482, 2483, 2484, 2485, 2486, 2487, 2488, 2489, 2490, 2491, 2492, 2493, 2494, 2495, 2496, 2497, 2498, 2499, 2500, 2501, 2502, 2503, 2504, 2505, 2506, 2507, 2508, 2509, 2510, 2511, 2512, 2513, 2514, 2515, 2516, 2517, 2518, 2519, 2520, 2521, 2522, 2523, 2524, 2525, 2526, 2527, 2528, 2529, 2530, 2531, 2532, 2533, 2534, 2535, 2536, 2537, 2538, 2539, 2540, 2541, 2542, 2543, 2544, 2545, 2546, 2547, 2548, 2549, 2550, 2551, 2552, 2553, 2554, 2555, 2556, 2557, 2558, 2559, 2560, 2561, 2562, 2563, 2564, 2565, 2566, 2567, 2568, 2569, 2570, 2571, 2572, 2573, 2574, 2575, 2576, 2577, 2578, 2579, 2580, 2581, 2582, 2583, 2584, 2585, 2586, 2587, 2588, 2589, 2590, 2591, 2592, 2593, 2594, 2595, 2596, 2597, 2598, 2599, 2600, 2601, 2602, 2603, 2604, 2605, 2606, 2607, 2608, 2609, 2610, 2611, 2612, 2613, 2614, 2615, 2616, 2617, 2618, 2619, 2620, 2621, 2622, 2623, 2624, 2625, 2626, 2627, 2628, 2629, 2630, 2631, 2632, 2633, 2634, 2635, 2636, 2637, 2638, 2639, 2640, 2641, 2642, 2643, 2644, 2645, 2646, 2647, 2648, 2649, 2650, 2651, 2652, 2653, 2654, 2655, 2656, 2657, 2658, 2659, 2660, 2661, 2662, 2663, 2664, 2665, 2666, 2667, 2668, 2669, 2670, 2671, 2672, 2673, 2674, 2675, 2676, 2677, 2678, 2679, 2680, 2681, 2682, 2683, 2684, 2685, 2686, 2687, 2688, 2689, 2690, 2691, 2692, 2693, 2694, 2695, 2696, 2697, 2698, 2699, 2700, 2701, 2702, 2703, 2704, 2705, 2706, 2707, 2708, 2709, 2710, 2711, 2712, 2713, 2714, 2715, 2716, 2717, 2718, 2719, 2720, 2721, 2722, 2723, 2724, 2725, 2726, 2727, 2728, 2729, 2730, 2731, 2732, 2733, 2734, 2735, 2736, 2737, 2738, 2739, 2740, 2741, 2742, 2743, 2744, 2745, 2746, 2747, 2748, 2749, 2750, 2751, 2752, 2753, 2754, 2755, 2756, 2757, 2758, 2759, 2760, 2761, 2762, 2763, 2764, 2765, 2766, 2767, 2768, 2769, 2770, 2771, 2772, 2773, 2774, 2775, 2776, 2777, 2778, 2779, 2780, 2781, 2782, 2783, 2784, 2785, 2786, 2787, 2788, 2789, 2790, 2791, 2792, 2793, 2794, 2795, 2796, 2797, 2798, 2799, 2800, 2801, 2802, 2803, 2804, 2805, 2806, 2807, 2808, 2809, 2810, 2811, 2812, 2813, 2814, 2815, 2816, 2817, 2818, 2819, 2820, 2821, 2822, 2823, 2824, 2825, 2826, 2827, 2828, 2829, 2830, 2831, 2832, 2833, 2834, 2835, 2836, 2837, 2838, 2839, 2840, 2841, 2842, 2843, 2844, 2845, 2846, 2847, 2848, 2849, 2850, 2851, 2852, 2853, 2854, 2855, 2856, 2857, 2858, 2859, 2860, 2861, 2862, 2863, 2864, 2865, 2866, 2867, 2868, 2869, 2870, 2871, 2872, 2873, 2874, 2875, 2876, 2877, 2878, 2879, 2880, 2881, 2882, 2883, 2884, 2885, 2886, 2887, 2888, 2889, 2890, 2891, 2892, 2893, 2894, 2895, 2896, 2897, 2898, 2899, 2900, 2901, 2902, 2903, 2904, 2905, 2906, 2907, 2908, 2909, 2910, 2911, 2912, 2913, 2914, 2915, 2916, 2917, 2918, 2919, 2920, 2921, 2922, 2923, 2924, 2925, 2926, 2927, 2928, 2929, 2930, 2931, 2932, 2933, 2934, 2935, 2936, 2937, 2938, 2939, 2940, 2941, 2942, 2943, 2944, 2945, 294*